

Lucy's Vine @Under the Garden Moon

Fabric Requirements:

15 - 1/4 yards of assorted fabrics

light pink

dark pink

blue

yellow

green

*the above fabrics are used in both the appliqué & the four-patches. We picked three different fabrics of each color.

2/3 yard pink fabric - background of four-patch sections

3/4 yard green fabric - vines and leaves

1 2/3 yard yellow fabric - appliqué background strips

1/4 yard green floral fabric - 1st border

3/4 yard pink floral fabric - outside border

3/4 yard dark pink fabric - binding

3 yards fabric - backing

-or- 1 1/2 yards plus scraps for pieced back - refer to layout

Cutting List:

Cut each section below, label them, and set them aside until needed for sewing.

*Take the 15 assorted 1/4 yards and cut 6 - 2 1/4" x 5" rectangles. This will give you a total of 90 rectangles.

*From the remainder of these 15 fabrics cut assorted flowers and dots for your appliqué strips.

Ours has 8 star flowers, 6 posies, and 7 bell flowers. Use an assortment of color combinations that will show up well on your background strips. We also cut 25 polka dots and sprinkled them throughout the three strips of appliqué.

*Take your pink fabric that you are using for the background of your four-patches and cut 20) 6 1/2" squares and 8) 3 1/2" squares. The 6 1/2" squares will be used for the side triangles. The 3 1/2" squares will form the corner triangles on your four-patch strips.

*From your green fabric, cut 1" wide bias stripping for the vines. You will need a total of 180". From this fabric you will also cut out 30 leaves.

*Cut three strips length wise off the yellow background fabric for the appliqué sections. Each strip needs to measure 6 1/2" wide x 60" long. We had you buy 1 2/3 yards of fabric so you would not need to piece these background strips, so you will have some extra fabric.

*Cut 6) 1 1/2" strips from your green floral 1/4 yard piece.

*Cut 6) 4 1/2" strips from the 3/4 yard outside border fabric.

*Cut 240" of 2 1/2" wide bias strips from your binding fabric.

Sewing the four-patch strips:

#1. Take your 90 2 1/4" x 5" rectangles and pair them up in sets of two, making sure they contrast.

#2. Sew each set of strips together to form a two-patch. Press seams toward the darker color.

#3. Cut each pressed two-patch as shown below. You will need to cut 2) 2 1/4" strips from each two-patch.



#4. Take the two strips and sew them together to form a four-patch.

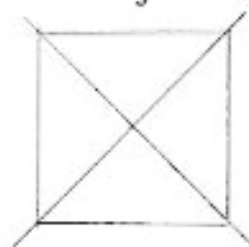


#5. Pop the center seam and press all the seams in a clockwise or counterclockwise direction. *Popping the seam in the center allows the center intersection to lie much flatter.



*The arrows above represent the way that the seams are pressed.

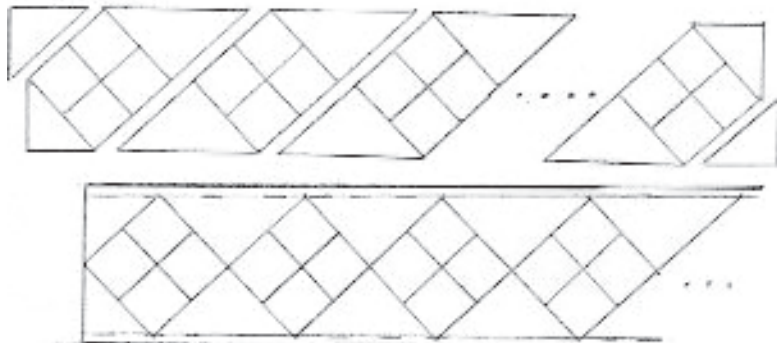
#6. Take the 20) 6 1/2" squares (for side triangles) that you cut from your pink fabric. Cut each square twice diagonally to form 4 triangles. You will have a total of 80 triangles.



#7. Take the 8) $3 \frac{1}{2}$ " squares (for corner triangles) that you previously cut from your pink fabric. Cut each square once diagonally to form two triangles. You will have a total of 16 triangles.



#8. Assemble four rows of four-patches with the side and corner triangles as shown below. Each row will have 1) four-patches, 4) corner triangles and 20) side triangles. You will have extra fabric hanging out along the long edges of your rows. You will need to trim this off $\frac{1}{4}$ " past the points of the four-patches before you sew your completed rows together. See illustration below.



Sewing the Appliquéd rows:

Measure the length of your four-patch rows. They should measure somewhere around $55 \frac{1}{2}$ ". You now need to cut your three appliquéd backgrounds to length. Cut them 1" longer than your four-patch rows to allow a little shrinkage as you appliquéd. Do not place any leaves or flowers super close to the edges to allow for trimming of the short ends and seam allowance on the long ends.

#1. Begin by sewing your bias cut pieces of vine together end to end. Lie them out on your three yellow background pieces in a curved design. Place all flowers, and leaves in place and appliquéd using your favorite method. Then place the polka dots randomly throughout the strips and appliquéd those. Some of our dots are hard to see which we like because it makes you look closely to see them.

**If you want to use the method we use, refer to the appliquéd instruction sheet included in this pattern. We like this method when you are doing a lot of repeats of the same shape, because you can pre-press all of the shapes and they are very easy to appliquéd.

Sewing the rows together:

Sew them together using a $\frac{1}{4}$ " seam. Press seams toward the appliquéd rows. Refer to photo.

Sewing on the borders:

#1. Take 4 of the 6 green $1 \frac{1}{2}$ " border strips and sew them together end to end to form a long strip. Lay your quilt top on the floor. Measure it from side to side three times, (once at the top, once at the bottom and once in the middle). Take the smallest of the three measurements and cut two border pieces to that exact measurement. Sew them to the top and bottom edges of your quilt top. Press toward the border.

Lay your quilt top back on the floor. Measure it from top to bottom three times. Take the smallest of the three measurements and cut two border pieces out of the four strips that you sewed together to that exact measurement. Sew these to the two sides of your quilt. Press toward the border.

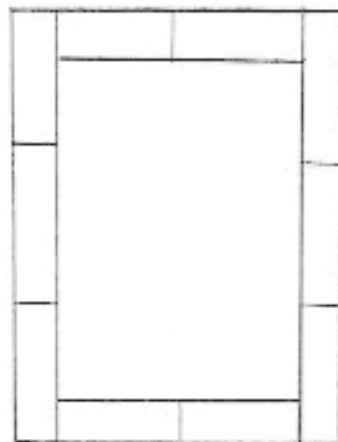
#2. Repeat this same process for the outer border using the pink $4 \frac{1}{2}$ " strips.

Pieced backing:

To use up your scraps from your $\frac{1}{4}$ yard pieces, and to create a fun back, follow these instructions.

#1. Square up your $1 \frac{1}{2}$ yards of backing fabric to $40 \frac{1}{2}$ " x 54 ". This will become the large center area of your backing.

#2. Take your leftover scraps from the four-patch fabric and cut 10 pieces that measure $6 \frac{1}{2}$ " x 23 ". Sew them around your center fabric as shown below. You can make some of them different lengths, just make sure that your backing is a little larger than your front to allow for quilting.



*Quilt as desired.

*Bind using the binding strips that you previously cut.

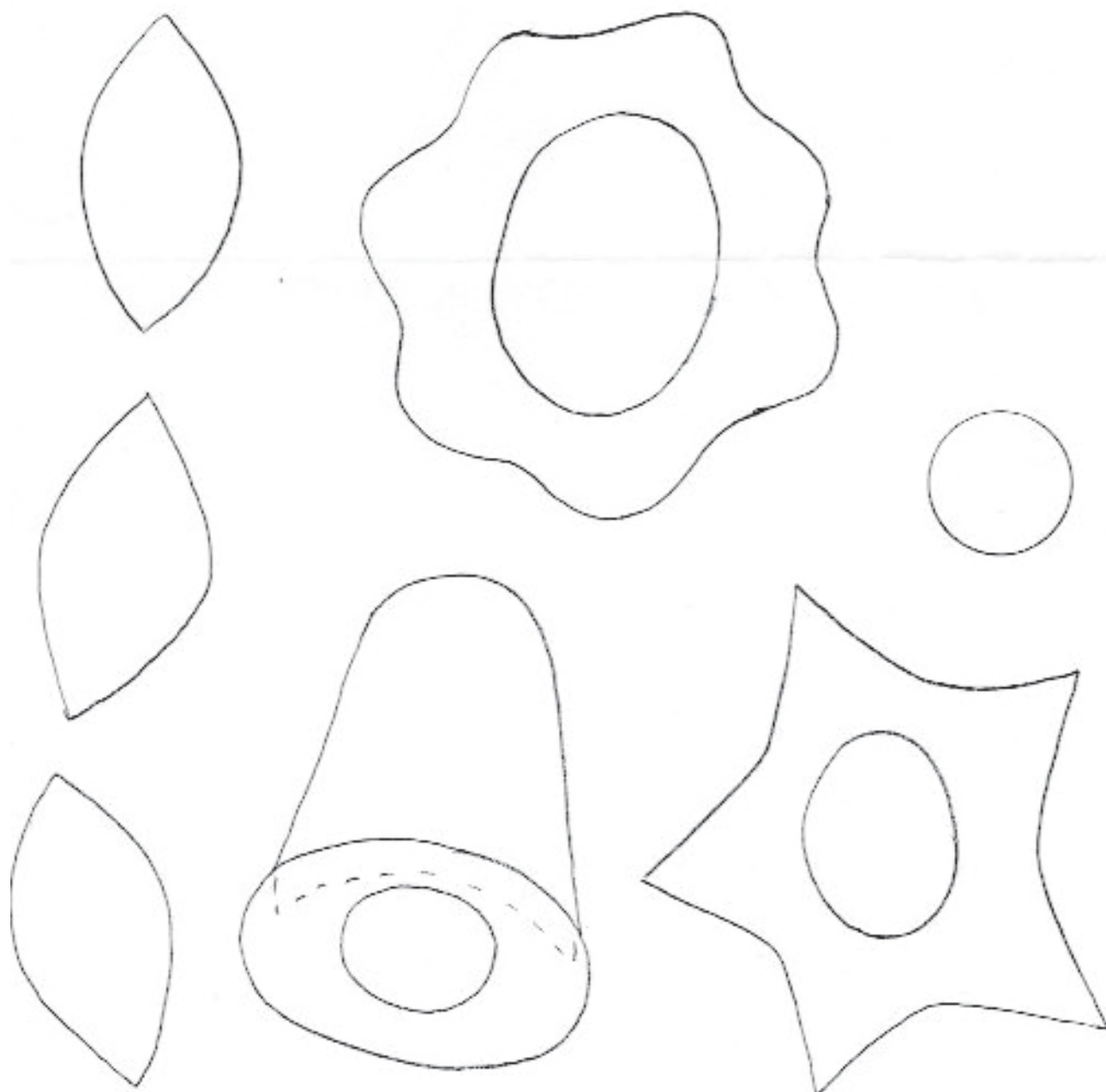
Appliqué Patterns

Choose your favorite method of appliqué. I have included a instruction sheet for Template appliqué if you want to use that method.

Refer to the photo for placement of the flowers and vine on your appliqué strips. There isn't a specific pattern for your vines. You want to make them all a little different from each other.

I have listed how many flowers of each shape below, but please feel free to change your vines to make them your own!

- 28 assorted shaped leaves
- 6 Posy's
- 6 bell flowers
- 7 star flowers
- 23 polka dots



Appliqué Instructions - Template Method ©Under the Garden Moon

This method of appliqué which I will describe is my favorite form of appliqué. This method does take some prep work but once the prep work is finished you are all set to sew.

You will need the following:

- freezer paper
- cereal box cardboard
- spray starch - regular
- straw/milliners needle - size 11
- high quality threads - match your thread to the appliqué pieces. My favorite thread is DMC, 50 weight cotton.

The following items are notions that I find helpful:

- Thread Heaven - This is a thread conditioner. It helps your thread to stay untangled as well as helping it last longer.
- appliqué pins - As you are sewing, the thread will not tangle around the pins as much as it would around a long pin.
- small iron - I like a small travel iron. They get nice and hot and usually have a nice point on the tip.
- finger protectors - Instead of a thimble which wears out my thread, I use a "needle grip-it" pad by colonial needle.
- inexpensive #8 flat paint brush - You can paint starch around the edge of your appliqué pieces to have the edges turn under nicely.

#1. Begin by tracing the appliqué shapes onto freezer paper. Cut out the shapes a little bit outside of the traced lines. Trace accurately and cut sloppily if you want. The cutting isn't important yet.

#2. Iron the traced shapes onto the brown side of your cardboard. You don't need to iron heavily, just get the paper mostly stuck to the cardboard. Cut out the shapes very smoothly, neatly and exactly on the lines. This is an important step. Take your time and cut carefully.

#3. Now you will cut out your fabric shapes. Gently peel the freezer paper off the cardboard shapes. You can then press the freezer paper to the right side of the fabric. You will need to add a ¼" seam allowance around all edges of the pattern. To do this, simply press the freezer paper to the right side of the fabric and estimate a ¼" seam allowance. Cut out your shape, then peel off the freezer paper.

#4. Take each individual piece of fabric; lay it on the ironing board, wrong side of fabric facing up. Mist it with spray starch, or you can paint the edge of the fabric with a paint brush dipped in starch. *To get the starch to the right consistency I spray the starch into the lid, let it sit for a few minutes and liquefy. Then it's all ready to paint onto the fabric.

--Center the corresponding cardboard shape onto the fabric piece - (the cardboard should be printed side up.) The brown side of the cardboard is against the wrong side of the fabric.

#5. Now press the ¼" seam allowance over the edge of the cardboard. Clip inside corners as you come to them. I don't clip any outside curves. Make sure all the edges are pressed nicely. Turn the piece over and press the piece with the cardboard still in it on the front side.

#6. Let the piece cool off then gently take out the cardboard. Now your piece is ready to stitch.

Helpful hints

You will have a good experience hand appliquéing if you will follow these guidelines:

- Use a shorter thread. About 20" long, longer threads break and tangle.
- Use thread conditioner.
- Pin your pieces in place with appliqué pins.
- Take some time to prepare your fabric pieces. Once they are all prepared you are ready to sew them on and the hard part is all finished.